

Figure and Index No.	Part Number
1	30000-01
1a	30001
1b	30002
1c	30003-020
1d	30004-01

CAMERA COMPLETE - SUPER GRAPHIC
 Lens Kit Complete
 Case - Lens Case with Tripod
 Lens in case
 Lensboard Case
 5 Day Assembly

PARTS LIST

The Group Assembly Parts Lists are listed in disassembly order. The list divides the components into major assemblies, their subassemblies and parts. By the use of indented columns, the relationship of the assemblies to the subassemblies and parts is obtained.

The column titled "Figure and Index No." contains the index number in disassembly order of the items illustrated. Do not use the figure or index number in correspondence--specify the catalog or part number and name. Finish should also be included where specified.

The column titled "nomenclature" (including numbered columns) lists item nomenclature on the Graflex drawing. The assembly in the column marked "3" will be a component of the first assembly which preceded it in the column marked "2" etc. The code "NP" will indicate that this part is "not procurable" and that the "next higher assembly" (NHA) should be ordered. The code "AR" is used for bulk items when an indefinite amount may or may not be used "as required". The code "LP" is used when an item may be "locally purchased."

NOTE: The case is selected after the lens has been measured for actual focal length (axis travel). If replacement case is required, refer to case nomenclature below.

CASE REQUIREMENT

1. Order by part number. If replacement case is required, refer to 2 and 3 below.
2. Determine the actual focal length of the lens by actual measurement (to the nearest 0.01 mm) and include this information when ordering. See "Actual Focal Length" listed below.
3. In the event information is not available, order the case which the lens is the nearest fit to. See "Actual Focal Length" listed below.

Case 30001 - Standard, lenses of focal length 50mm and from 75mm to 100mm. Includes lens cap and telephone lens at 50mm. Weight and dimensions listed.

Case 30002 - Special, lenses of focal length other than those included in Case 30001 and falling within the range of 50mm and 100mm.

Case 30003 - Special, lenses of focal length other than those included in Case 30001 and falling within the range of 50mm and 100mm. (Special order required).

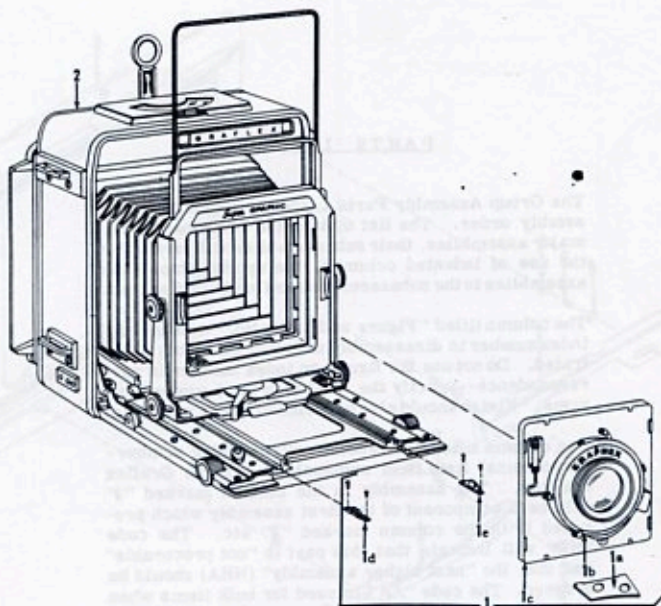


Figure 1. CAMERA COMPLETE - SUPER GRAPHIC

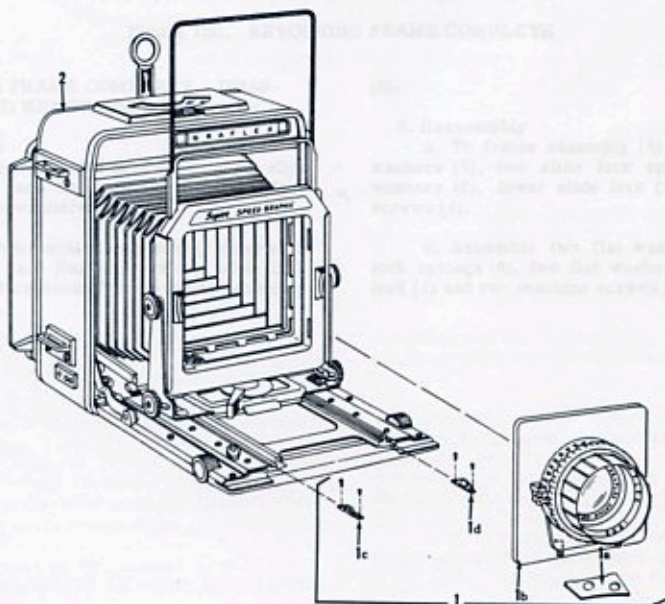


Figure 1A. CAMERA COMPLETE - SUPER SPEED GRAPHIC

Figure and Index No.	Part Number	1	2	3	4	5	Nomenclature	Qty.
1-	Ref.						CAMERA COMPLETE - SUPER GRAPHIC	1
-1	Ref.						. Lens Kit Complete	1
-1a	Ref.						. . Cam - Lens (see note below)	1
-1b	Ref.						. . Lens in shutter (as selected)	1
-1c	Ref.						. . Lensboard Complete - Super Graphic (see Section 8A) . . .	1
-1d	30655-G1						. . Stop Assembly - Right (includes screws)	1
-1e	30655-G2						. . Stop Assembly - Left (includes screws)	1
	30661						. . . Screw - Stop Assembly (pointed, rear)	2
	30662						. . . Screw - Stop Assembly (flat, front)	2
-2	36000-G2G						. Camera Basic (over serial no. 646124) Figure 2	Ref.
	36000-G1						. Camera Basic (up to serial no. 646124) Figure 9	Ref.

Figure and Index No.	Part Number	1	2	3	4	5	Nomenclature	Qty.
1A-	Ref.						CAMERA COMPLETE - SUPER SPEED GRAPHIC	1
-1	Ref.						. Lens Kit Complete	1
-1a	Ref.						. . Cam - Lens (see note below)	1
-1b	Ref.						. . Graflex 1000 Shutter (see Section 80)	1
-1c	30655-G1						. . Stop Assembly - Right (includes screws)	1
-1d	30655-G2						. . Stop Assembly - Left (includes screws)	1
	30661						. . . Screw - Stop Assembly (pointed, rear)	2
	30662						. . . Screw - Stop Assembly (flat, front)	2
-2	36000-G2S						. Camera Basic (Figure 2)	Ref.

NOTE: The cam is selected after the lens has been optically measured for actual focal length (lens travel). If replacement cam is required, refer to cam procurement below.

CAM PROCUREMENT

1. Order by part number if known (stamped on cam) otherwise, refer to 2 and 3 below.
2. Determine the actual focal length of the lens, by optical measurement (to the nearest .001 of an inch). Specify this information when ordering, and use proper Catalog Number listed below.
3. In the event information in 2 above cannot be supplied, return the lens to the nearest Graflex Service Department, where the optical measurement will be determined and the proper cam supplied. See page 45 for address of nearest Graflex Service Department.

Cat. #3021	Cam - Standard, lenses of focal length of 90mm and from 127mm to 165mm inclusive plus 202mm and telephoto lenses of 25cm, 27cm, (270mm) and 38cm focal length
Cat. #3022	Cam - Special, lenses of focal length other than those included in listing of Cat. #3021 and falling within the range of 88mm and 380mm
Cat. #9473	Collimation Service (applicable when par. 3 under Cam Procurement is required)

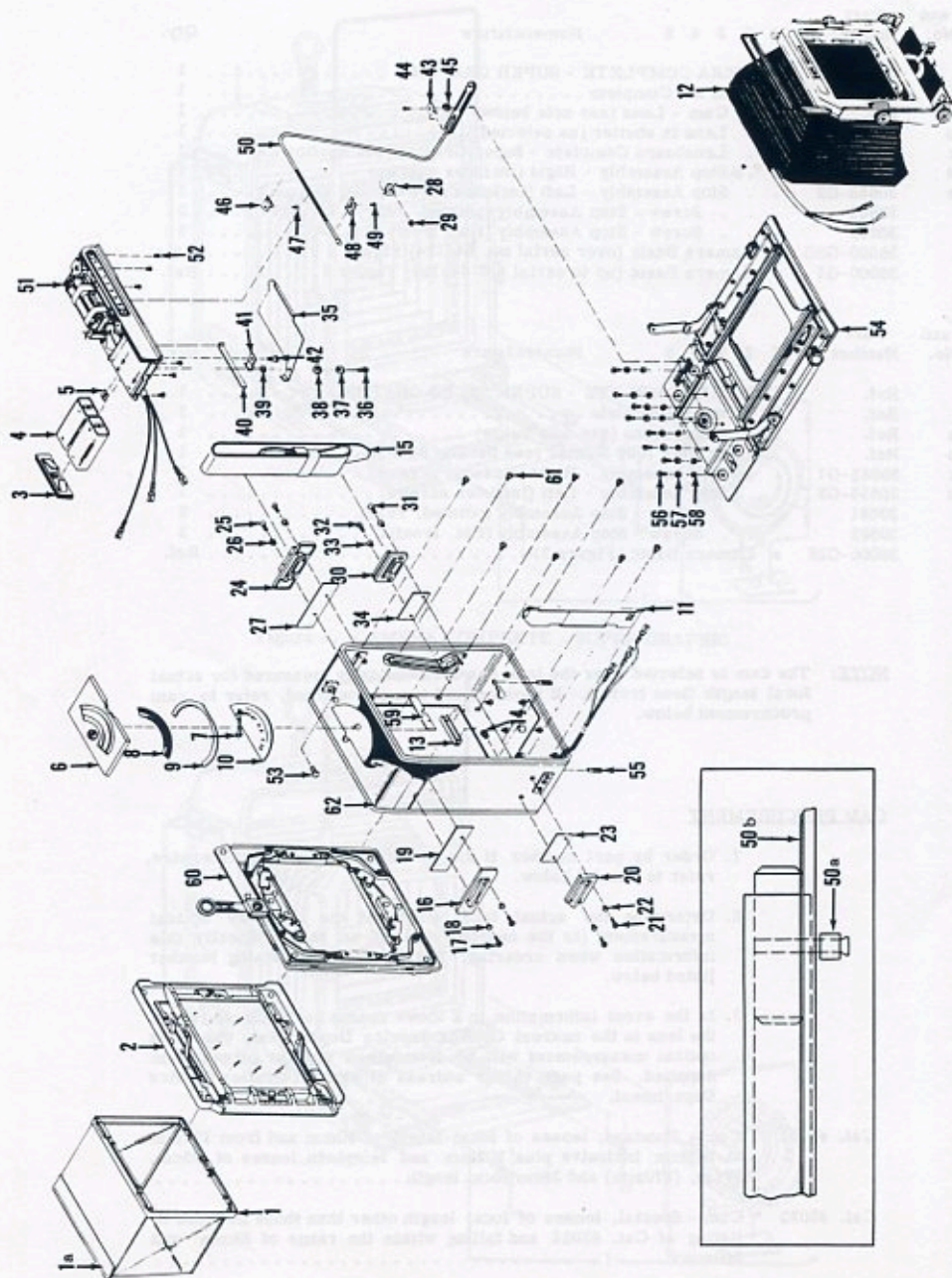


Figure 2. CAMERA BASIC (over serial No. 646124)

Figure and Index No.	Part Number	1	2	3	4	5	Nomenclature	Qty.
2-	36000-G2G						CAMERA BASIC - SUPER GRAPHIC (over serial no. 646124) . . .	Ref.
	36000-G2S						CAMERA BASIC - SUPER SPEED GRAPHIC	Ref.
-1	36082-G1						Hood Assembly - Focusing	1
-1a	36087-P1						Clip - Dark Slide	1
-2	36073-G1						Frame Assembly - Focusing (Figure 3)	1
-3	36198-G1						Cover Assembly - Battery Compartment	1
-4	33111						Battery, 22-1/2 v., flat type, Eveready Cat. #412 or equal.	2 LP
-5	36328-P1						Clip - Retainer	1
-6	36176-G1						Cover Assembly - Focusing Scale	1
-7	36002						Indicator - Focusing Scale	1
-8	36001-P1						Guide - Exposure	1
-9	36197-P1						Spring - Exposure Guide	1
-10	36213-P1						Plate - Focusing Scale	1
-11	36341-G1						Cover Assembly - Terminal Board	1
-12	36096-G2						Standard Complete - Front (Super Graphic) Figure 4	1
	36096-G3						Standard Complete - Front (Super Speed Graphic) Figure 4	1
	Attaching Part							
-13	32459						Clip - Bellows	6

-14	36340						Stud - Terminal Board Cover	1
-15	36006-P1						Handle	1
-16	36021-P1						Bracket - Handle, Upper (right side)	1
	Attaching Parts							
-17	100-4R6E						Screw - Machine, 3/8 in. lg., #4-40, flat head, Phillips Drive, steel, chrome plate(See note #1)	2
-18	36231						Washer - Insulating, Parker-Kalon #106, nylon.	2
-19	-----							
-19	36227-P1						Insulator - Handle Bracket.	1
-20	36021-P2						Bracket - Handle, Lower (right side)	1
	Attaching Parts							
-21	100-4R5E						Screw - Machine, 5/16 in. lg., #4-40, flat head, Phillips Drive, steel, chrome plate(See note #1)	2
-22	36231						Washer - Insulating, Parker-Kalon #106, nylon.	2
-23	-----							
-23	36227-P2						Insulator - Handle Bracket.	1
-24	36021-P1						Bracket - Handle, Upper (left side)	1
	Attaching Parts							
-25	100-4R5E						Screw - Machine, 5/16 in. lg., #4-40, flat head, Phillips Drive, steel, chrome plate(See note #1)	2
-26	36231						Washer - Insulating, Parker-Kalon #106, nylon.	2
-27	-----							
-27	36227-P1						Insulator - Handle Bracket.	1
-28	36193-P2						Clamp	1
	Attaching Part							
-29	200-4HL						Nut - Machine, #4 hex., steel, black oxide(See note #2)	1
-30	-----							
-30	36021-P2						Bracket - Handle, Lower (left side)	1
	Attaching Parts							
-31	100-4R5E						Screw - Machine, 5/16 in. lg., #4-40, flat head, Phillips Drive, steel, chrome plate(See note #1)	1
-32	100-4R6E						Screw - Machine, 3/8 in. lg., #4-40, flat head, Phillips Drive, steel, chrome plate(See note #1)	1
-33	36231						Washer - Insulating, Parker-Kalon #106, nylon.	2
-34	-----							
-34	36227-P2						Insulator - Handle Bracket.	1
-35	36092-P1						Cover - Cam	1
	Attaching Parts							
-36	116-2-6W						Screw - Machine, 3/8 in. lg., #2-56 pan head, slotted, steel, black oxide & lacq.	1
-37	36244						Collar - Cam Cover	1
-38	30540-P2						Washer - Spring.	1

NOTE:
1. Thread forming screw p/n 141-4R6H replaces machine screws 17, 21, 25, 31 & 32.
2. Flat washer p/n 33500-6SL is used with machine nut item 29.

Figure and Index No.	Part Number	1	2	3	4	5	Nomenclature	Qty.
2-39	30473-P25L	.					Washer - Flat, 0.281 in. OD x 0.093 in. ID x 0.012 in. thk., steel black oxide	1
-40	36130	.					Spring - Cam Cover	1
-41	36193-P1	.					Clamp	1
	Attaching Part							
-42	36128	.					Stud - Cam Cover Spring	1

-43	36193-P1	.					Clamp	1
	Attaching Part							
-44	102B3-4K	.					Screw - Machine, 1/4 in. lg., #3-48, round head, slotted, brass, oxide black (See Note)	1

-45	33500-P36	.					Washer - Flat, 0.312 in. OD x 0.128 in. ID x 0.062 in. thk., phenolic	1
-46	34723-P2	.					Clamp	1
	Attaching Part							
-47	102-3-2W	.					Screw - Machine, 1/8 in. lg., #3-48, round head, slotted, steel, black oxide & lacq. (See Note)	1

-48	36193-P2	.					Clamp	1
	Attaching Part							
-49	102-3-2W	.					Screw - Machine, 1/8 in. lg., #3-48, round head, slotted, steel, black cadmium plate (See Note)	1

-50	34739-G2	.					Tube Assembly - Rangefinder	1
-50a	36009	.					Collar - Pin	1
-50b	36195	.					Slide - Rangefinder Actuating	1
-51	36145-G2	.					Housing Complete - Rangefinder (Figure 5)	1
	Attaching Part							
-52	116-2-2A	.					Screw - Machine, 1/8 in. lg., #2-56, pan head, slotted, steel, cadmium plate	6

-53	36023-P1	.					Button - Shutter Release (0.547 in. lg.)	1
	36023-P2	.					Button - Shutter Release (0.501 in. lg.)	1
	36023-P3	.					Button - Shutter Release (0.591 in. lg.)	1
-54	36035-G1	.					Bed Complete (Super Graphic) Figure 6	1
	36035-G3	.					Bed Complete (Super Speed Graphic) Figure 6	1
	Attaching Parts							
-55	182A6-4	.					Pin - Groov, 1/4 in. lg., 1/8 in. dia., Groove-Pin Corp. Type #3, chrome vanadium steel	2
-56	116-2-4C	.					Screw - Machine, 1/4 in. lg., #2-56, pan head, slotted, steel, chrome plate	8
-57	221-2L	.					Washer - Lock, internal tooth, for #2 screw, Shakeproof Cat. #1202, steel, black oxide	8
-58	30473-P44K	.					Washer - Flat, 0.250 in. OD x 0.099 in. ID x 0.025 in. thk., brass, oxide black	8

-59	36211-P3	.					Insulator	1
-60	36060-G1	.					Back Assembly (Figure 7)	1
	Attaching Part							
-61	110-6R-3W	.					Screw - Machine, 3/16 in. lg., #6-32, straight side binding head, steel, black oxide	8

-62	36020-G2	.					Body Complete (Figure 8)	1

NOTE: Flat Washer p/n 33500-65L (1 req.) used with screws 44, 47 & 49 not shown.

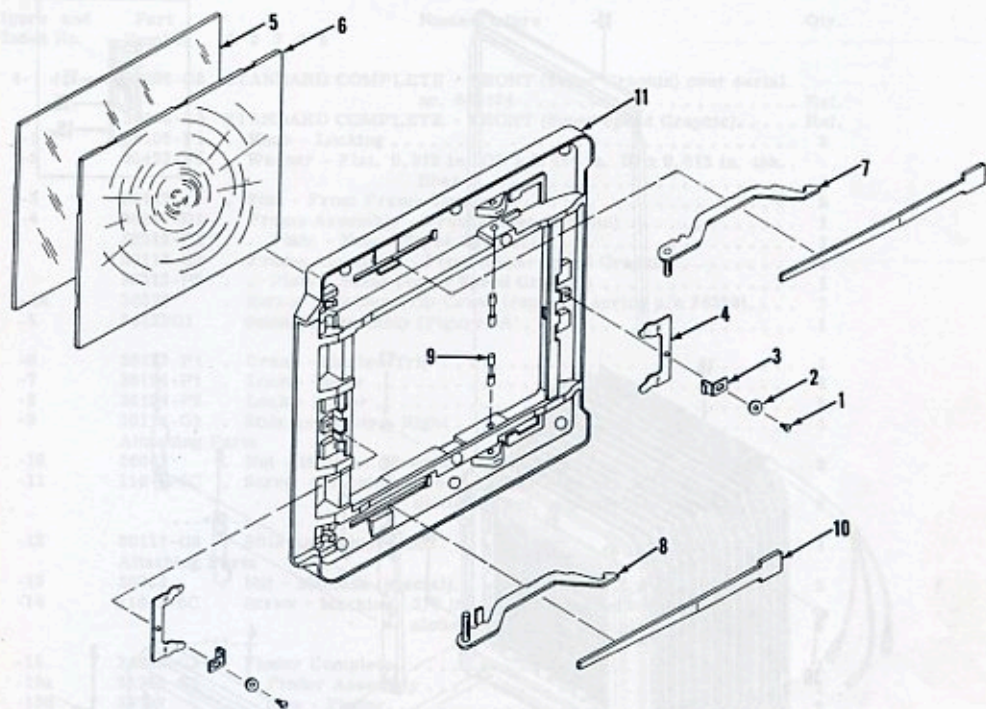


Figure 3. FOCUSING FRAME ASSEMBLY

Figure and Index No.	Part Number	1	2	3	4	5	Nomenclature	Qty.	
3-	36073-G1	FRAME ASSEMBLY - FOCUSING						Ref.	
-1	116-2-3A						Screw - Machine, 3/16 in. lg., #2-56, pan head, slotted, steel, cadmium plate	2	
-2	30473-P25L						Washer - Flat, 0.281 in. OD x 0.093 in. ID x 0.012 in. thk., steel, black oxide	2 (no longer used)	
-3	36076						Retainer - Focusing Hood	2	
-4	36075-P1						Retainer - Focusing Screen	2	
-5	30414-P1						Screen - Ground Glass	1	
-6	31935-P1						Screen - Ektalite	1	
-7	36079-G1						Arm Assembly - Upper	1	
-8	36079-G2						Arm Assembly - Lower	1	
-9	36077						Pin - Spring	2	
-10	36078						Spring - Arm Assembly	2	
-11	36074-P1						Frame - Focusing	1	

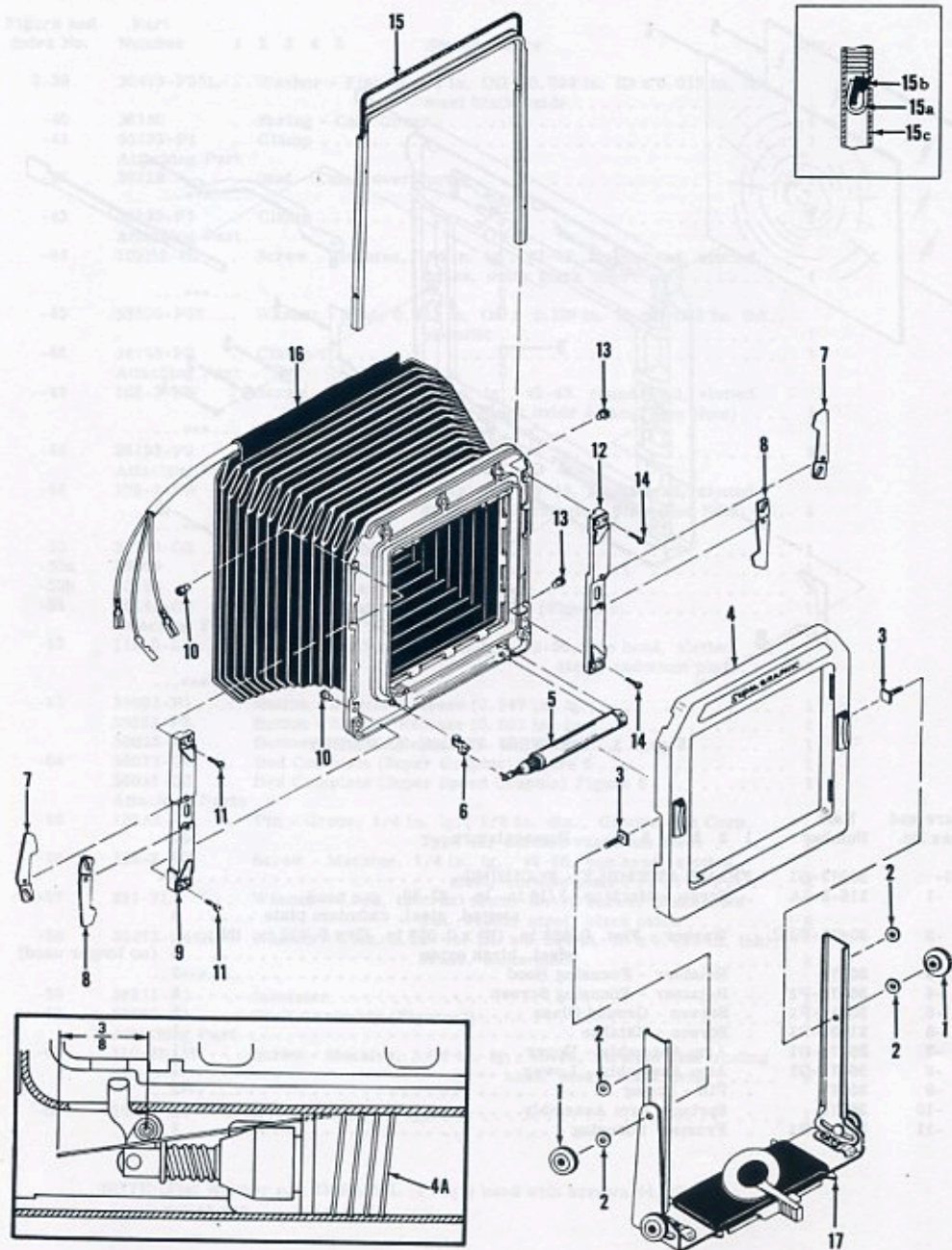


Figure 4. FRONT STANDARD COMPLETE

Figure and Index No.	Part Number	Nomenclature					Qty.
		1	2	3	4	5	
4-	36096-G2	STANDARD COMPLETE - FRONT (Super Graphic) over serial no. 646124					Ref.
	36096-G3	STANDARD COMPLETE - FRONT (Super Speed Graphic)					Ref.
-1	36105-P1	. Knob - Locking					2
-2	30473-P6	. Washer - Flat, 0.312 in. OD x 0.128 in. ID x 0.015 in. thk., fiber					4
-3	36127	. Stud - Front Frame Locking					2
-4	36117-G1	. Frame Assembly - Front (Super Graphic)					1
	36212-P1	. . Plate - Name (Super Graphic)					1
	36117-G2	. Frame Assembly - Front (Super Speed Graphic)					1
	36212-P2	. . Plate - Name (Super Speed Graphic)					1
-4A	36378	. Spring - Shutter Trip Crank (replaces spring p/n 36258)					1
-5	36133G1	. Solenoid Assembly (Figure 4A)					1
-6	36123-P1	. Crank - Shutter Trip					1
-7	36124-P1	. Lock - Upper					2
-8	36124-P2	. Lock - Lower					2
-9	36113-G1	. Stile Assembly - Right					1
	Attaching Parts						
-10	36043	. Nut - Machine (special)					2
-11	116-2-6C	. Screw - Machine, 3/8 in. lg., #2-56, pan head, slotted, steel, chrome plate					2

-12	36113-G2	. Stile Assembly - Left					1
	Attaching Parts						
-13	36043	. Nut - Machine (special)					2
-14	116-2-6C	. Screw - Machine, 3/8 in. lg., #2-56, pan head, slotted, steel, chrome plate					2

-15	34848-G3	. Finder Complete					1
-15a	34785-G1	. . Finder Assembly					1
-15b	34787	. . Stop - Finder					2
-15c	34795-P3	. . Frame - Finder					1
-16	36125-G2	. Bellows Complete (Figure 4B)					1
-17	36178-G1	. Standard Assembly - Front (Figure 4C)					1

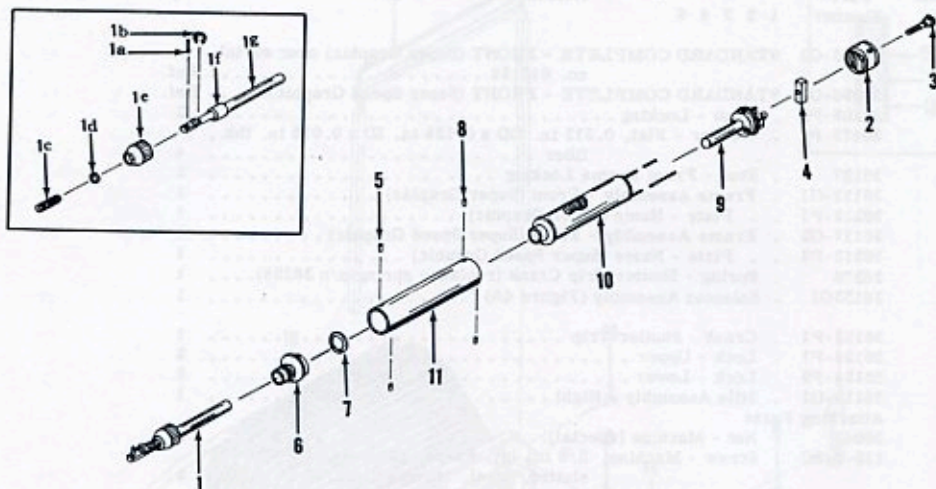


Figure 4A. SOLENOID ASSEMBLY

Figure and Index No.	Part Number	1	2	3	4	5	Nomenclature	Qty.	
4A-	36133-G1	SOLENOID ASSEMBLY						Ref.	
-1	36194-G1	Plunger Assembly						1	
-1a	35439-P2	Shaft - Plunger						NP NHA	
-1b	251-8	Ring - Retaining, Waldes-Kohlnoor Cat. #X5133-14, steel						1	
-1c	36122	Spring - Plunger						1	
-1d	30473-P19	Washer - Flat						NP NHA	
-1e	36137-P2	Cap - Solenoid						NP NHA	
-1f	36192-P1	Collar - Plunger						NP NHA	
-1g	36312-P1	Plunger - Solenoid						NP NHA	
-2	25855	Cover - Bottom						1	
-3	36164	Screw - Machine (special)						1	
-4	31297	Cushion - Terminal						1	
-5	36138	Rollpin						NP NHA	
-6	36136-P1	Collar - Armature						NP NHA	
-7	30473-P5	Washer - Flat						NP NHA	
-8	35473-P22	Washer - Flat						NP NHA	
-9	36138	Rollpin						NP NHA	
-10	36139-G1	Base Assembly						NP NHA	
-11	36143-G1	Coil Assembly						NP NHA	
-11	36135-P1	Housing - Solenoid						NP NHA	

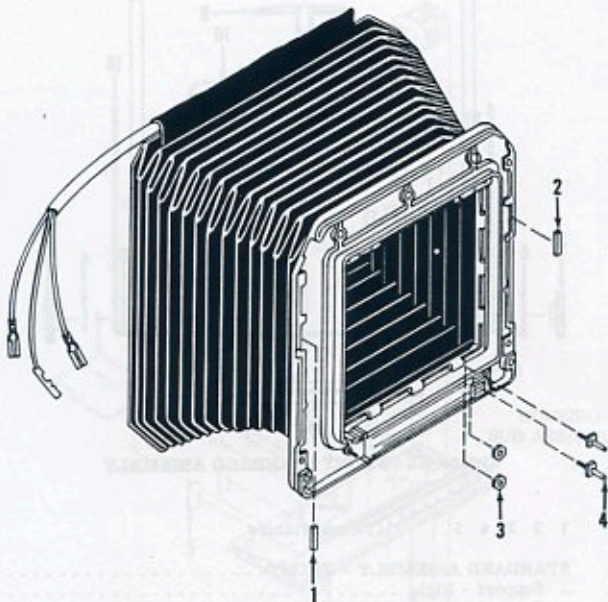


Figure 4B. BELLOWS COMPLETE

Figure and Index No.	Part Number	1	2	3	4	5	Nomenclature	Qty.
4B-	36125-G2						BELLOWS COMPLETE (over serial no. 646124)	Ref.
-1	36337-P1						. Shim - Right	1
-2	36337-P2						. Shim - Left	1
-3	200B1HR						. Nut - Machine, #1 hex, brass, tin plate	2
-4	36121-P1						. Contact - Solenoid	2
	No Number						. Bellows and Base Assembly	NP NHA

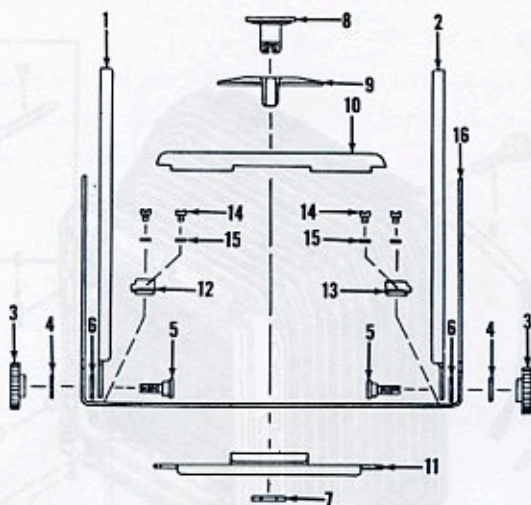


Figure 4C. FRONT STANDARD ASSEMBLY

Figure and Index No.	Part Number	1	2	3	4	5	Nomenclature	Qty.	
4C-	36178-G1	STANDARD ASSEMBLY - FRONT						Ref.	
-1	36100-P1	Support - Right						1	
-2	36100-P2	Support - Left						1	
Attaching Parts									
-3	36105-P1	Knob - Locking						2	
-4	30473-P6	Washer - Flat, 0.312 in. OD x 0.128 in. ID x 0.015 in. thk., fiber						2	
-5	36104-P1	Screw - Machine (special)						2	
-6	36214	Washer - Flat (special)						2	

-7	36103	Nut - Machine (special)						1	
-8	36102-P2	Screw - Machine (special) replaces 36102-P1						1	
*	36102-P1	Screw - Machine (special)						Ref.	
-9	36367-P1	Lever - Lock (replaces 36101-P1)						1	
*	36101-P1	Lever - Lock						Ref.	
-10	36366-P1	Plate - Lock, Upper (replaces 36109-G1)						1	
*	36109-G1	Plate Assembly - Locking, Upper						Ref.	
-11	36362-G1	Plate Complete - Locking, Lower (replaces 36106-G1)						1	
*	36106-G1	Plate Assembly - Locking, Lower						Ref.	
-12	36098-P1	Stop - Right						1	
-13	36098-P2	Stop Left						1	
Attaching Parts									
-14	36099	Screw - Machine (special)						4	
-15	30473-P20	Washer - Flat, 0.203 in. OD x 0.124 in. ID x 0.010 in. thk., stainless steel						4	

-16	36097-P1	Standard - Front						1	

- * These items were used on early front standard assembly and are no longer available for replacement. Early front standard assemblies can be identified by the Upper Locking Plate Assembly (36109-G1) which included a leather insert. When making replacements on any of these items, it will be necessary to order each of the following: Machine Screw 36102-P2 - Lock Lever 36367-P1 - Upper Lock Plate 36366-P1 and Lower Locking Plate Complete 36362-G1.

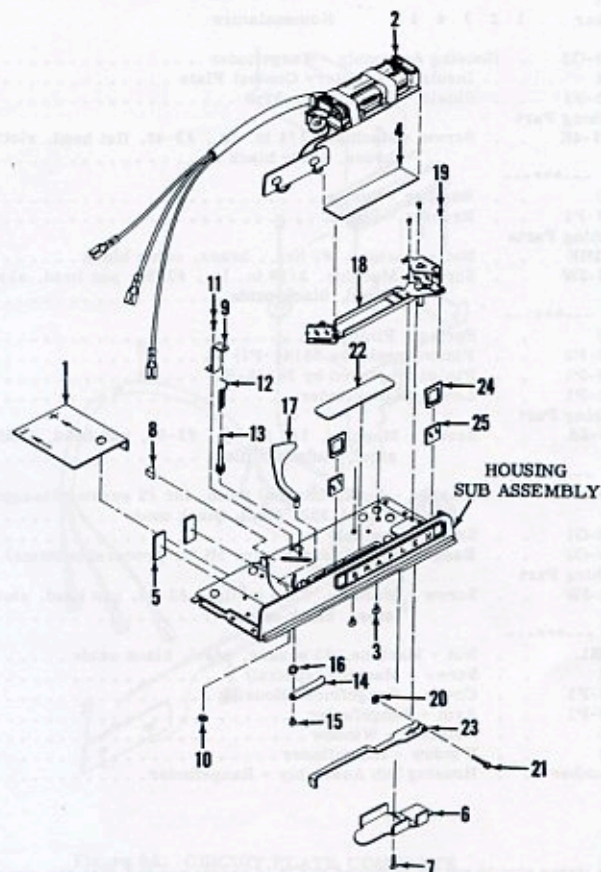


Figure 5. RANGEFINDER HOUSING COMPLETE

Figure and Index No.	Part Number	1	2	3	4	5	Nomenclature	Qty.
5 -	36145-G2						HOUSING COMPLETE - RANGEFINDER (over serial no. 646124) Ref.	
	36229						. Partition - Battery (replaced by 36349-P1)	Ref.
-1	36349-P1						. Guard (replaces p/n 36229 & 36217)	1
	36217						. Guard (flat type, replaced by 36349-P1)	Ref.
-2	36207-G2						. Plate Complete - Circuit (Figure 5A)	1
	Attaching Part							
-3	131-3-3L						. Screw - Thread Cutting, 3/16 in. lg., #3, Shakeproof Type 23, binding (pan) head, slotted, steel, black oxide	2

-4	36145-P37						. Insulator, 2-1/8 in. lg., 1/2 in. wide, 0.007 in. thk., varnished cambric cloth	1 LP

Figure and Index No.	Part Number	1	2	3	4	5	Nomenclature	Qty.
5 -	36145-G3	Housing Assembly - Rangefinder	1
-5	36346	Insulator - Battery Contact Plate	2
-6	36245-P1	Shield - Rangefinder Arm	1
	Attaching Part							
-7	100B3-4K	Screw - Machine, 1/4 in. lg., #3-48, flat head, slotted, brass, oxide black	1

-8	36010	Bumper - Sector	1
-9	36147-P1	Bracket - Pinion	1
	Attaching Parts							
-10	200B2HK	Nut - Machine, #2 hex., brass, oxide black	1
-11	116-2-3W	Screw - Machine, 3/16 in. lg., #2-56, pan head, slotted, steel, black oxide	1

-12	36149	Spring - Pinion	1
-13	36148-P2	Pinion (replaces 36148-P1)	1
	36148-P1	Pinion (replaced by 36148-P2)	Ref.
-14	36150-P1	Lever - Rangefinder	1
	Attaching Part							
-15	116-2-2A	Screw - Machine, 1/8 in. lg., #2-56, pan head, slotted, steel, cadmium plate	1

-16	221-2L	Washer - Lock, internal tooth, for #2 screw, Shakeproof Cat. #1202, steel, black oxide	1
-17	36155-G1	Sector Assembly	1
-18	* 36158-G2	Base Complete (see Figure 5B for procurable items)	1
	Attaching Part							
-19	* 116-2-3W	Screw - Machine, 3/16 in. lg., #2-56, pan head, slotted, steel, black oxide	3

-20	* 200-3SL	Nut - Machine, #3 square, steel, black oxide	1
-21	* 36152	Screw - Machine (special)	1
-22	* 36153-P1	Cover - Rangefinder Housing	1
-23	* 36169-P1	Arm - Rangefinder	1
-24	36205	Retainer - Window	2
-25	36154	Window - Rangefinder	2
	No Number	Housing Sub Assembly - Rangefinder	Ref.

* These items should not be removed and it is recommended that the rangefinder housing assembly be returned for exchange. See note below.

NOTE: To insure trouble free operation, remove indexes 1, 2, 3, & 4 and return rangefinder housing assembly to the nearest Graflex Service Department. An alternate rangefinder housing assembly (at nominal charge), with critical mirror and lever adjustments accomplished, will be returned. A focusing scale indicator (Figure 2-7) and guard (Figure 5-1) will also be furnished for installation. Use Cat. #9472 in correspondence when using the exchange program for rangefinder housing assemblies.

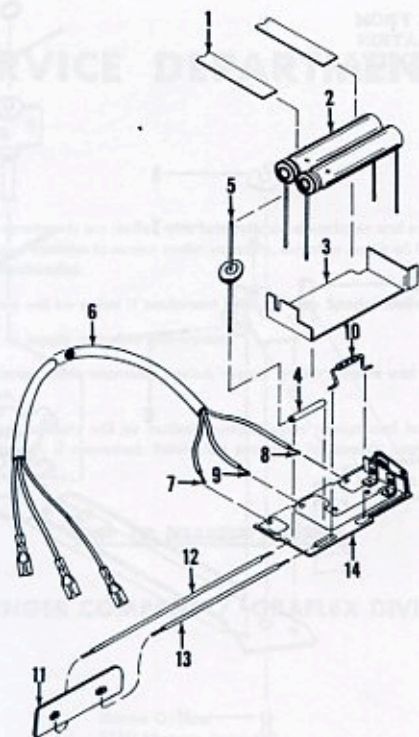


Figure 5A. CIRCUIT PLATE COMPLETE

Figure and Index No.	Part Number	1	2	3	4	5	Nomenclature	Qty.
5A-	36207-G2						PLATE COMPLETE - CIRCUIT (over serial no. 646124)	Ref.
-1							. Tape (5/16 in. wide) black Mylar, 3M Scotch Brand Cat. #850	AR LP
-2	36167-P1						. Capacitor	2
-3	36203						. Insulator	1
-4	37238-P9						. Tubing (3/4 in. lg.) #20, black extruded vinyl	1 LP
-5	38293-P4						. Diode, JEDEC No. IN2483	1
-6	37238-P7						. Tubing (4-1/2 in. lg.) #10, black extruded vinyl	1 LP
-7	36325-G3						. Wire Assembly (yellow)	1
-8	36325-G5						. Wire Assembly (black)	1
-9	36325-G6						. Wire Assembly (white)	1
-10	402-27-2-2						. Resistor, 1/2 w., 2700 ohms	1
-11	36208-G1						. Plate Assembly - Battery Contact	1
-12	36207-P6						. Wire (4-1/2 in. lg.) No. 24 AWG, black insulation	1 LP
-13	36207-P7						. Wire (3-1/4 in. lg.) No. 24 AWG, black insulation	1 LP
-14	36162-G2						. Plate Assembly - Circuit (includes switch)	1

DO NOT REMOVE FROM HOUSING; ILLUSTRATION FOR REFERENCE ONLY.

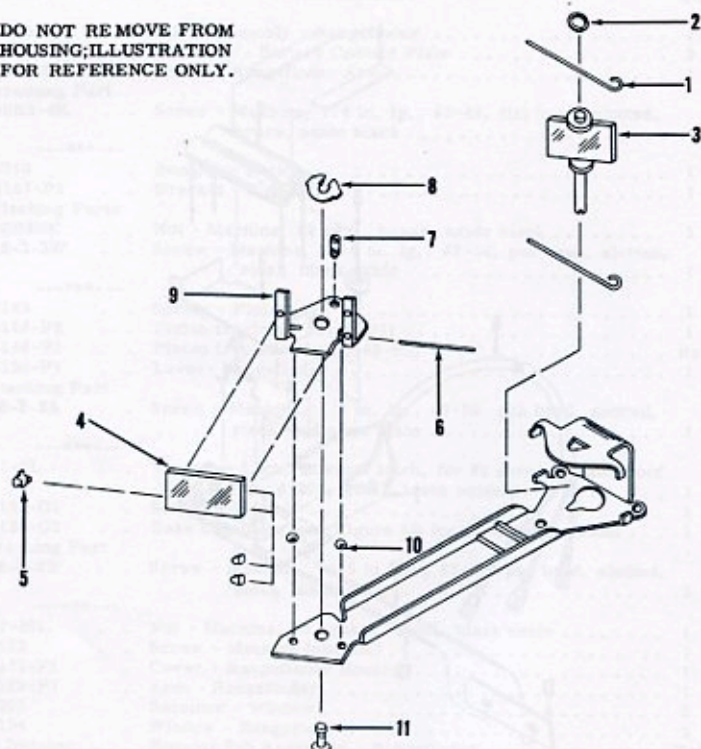


Figure 5B. BASE COMPLETE

Figure and Index No.	Part Number	1	2	3	4	5	Nomenclature	Qty.
5B-	36158-G2						BASE COMPLETE	Ref.
-1	36160						Spring - Mirror Shaft	2
-2	35473-P9	*					Washer - Flat	Ref.
-3	36013-G1	*					Mirror & Shaft Assembly	Ref.
-4	34711						Mirror - Transparent	Ref.
							Attaching Part	
-5	32416-P1						Retainer - Mirror	3
-6	36235						Wire - Mount, 3/4 in. lg. x 0.062 in. dia., steel	1 LP
-7	34709						Screw - Machine (special)	1
-8	256-1L						Ring - Retaining, Waldes Kohinoor, Inc. p/n 5139-12, steel, black oxide	1
-9	34710-P1						Mount - Transparent Mirror	1
-10	300-3						Ball - Steel (0.0625 in. dia.)	2
-11	34708	*					Stud - Transparent Mirror Mount	Ref.
	No Number						Base Sub Assembly	Ref.

* These items should not be removed and it is recommended that the rangefinder housing assembly be returned for exchange. See note on page 42.

SERVICE DEPARTMENTS

These Departments are staffed with factory-trained workmen and equipped with proper facilities to service under warranty, adjust or repair all Graflex-made merchandise.

Much time will be saved if equipment is shipped by **Special Delivery**.

Be sure to supply complete instructions.

If unit comes within warranty period, supply owner's name and date of purchase.

Quotation estimate will be mailed promptly upon receipt and inspection of equipment, if requested. Return this promptly for speedy servicing of unit.

SHIP TO NEAREST ADDRESS

THE SINGER COMPANY / GRAFLEX DIVISION

Home Office:
3750 Monroe Avenue
Rochester, New York 14603

Eastern Region:
1406 Bergen Blvd.
Ft. Lee, New Jersey 07024

Graflex of Canada Limited:
47 Simcoe Street
Toronto 1, Ontario, Canada

Western Region:
800 North Cole Avenue
Hollywood, California 90038

Midwest Region:
5515 Milton Parkway
Rosemont, Illinois 60018

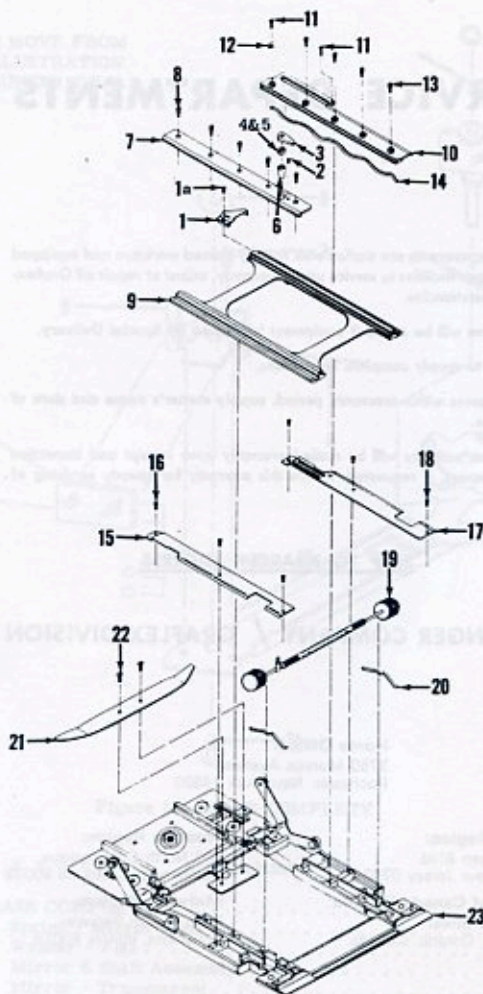


Figure 6. BED COMPLETE

Figure and Index No.	Part Number	1	2	3	4	5	Nomenclature	Qty.
6-	36035-G1						BED COMPLETE (Super Graphic)	Ref.
	36035-G3						BED COMPLETE (Super Speed Graphic)	Ref.
-1	36369-G1	.					Bracket Assembly - Rangefinder Actuating (replaces 36059-P1, 34932 & 32432)	1
-1a	36370	.	.				Screw - Machine (special)	1
	36059-P1	.					Bracket - Rangefinder Actuating (replace with 36369-G1)	Ref.
Attaching Parts								
	34932	.					Screw - Machine (special) available for replacement	2
	32432	.					Plate - Actuating Bracket (replace with 36369-G1)	Ref.

Figure and Index No.	Part Number	1	2	3	4	5	Nomenclature	Qty.
6-2	31246-P4	.					Screw - Machine (special)	1
-3	36042-P1	.					Lever - Yoke Lock	1
-4	30473-P11K	.					Washer - Flat, 0.281 in. OD x 0.177 in. ID x 0.010 in. thk., brass, oxide black	AR
-5	33500-P72K	.					Washer - Flat, 0.281 in. OD x 0.177 in. ID x 0.005 in. thk., brass, oxide black	AR
-6	36041	.					Sleeve - Yoke Lock	1
-7	36036-P1	.					Guide - Yoke, Right	1
-8	Attaching Part 116-2-6C	.					Screw - Machine, 3/8 in. lg., #2-56, pan head, slotted, steel, chrome plate	5
-9	36058-P1	.					Yoke - Bed	1
-10	36037-P1	.					Guide - Yoke, Left	1
-11	Attaching Part 116-2-6C	.					Screw - Machine, 3/8 in. lg., #2-56, pan head, slotted, steel, chrome plate	2
-12	221-2L	.					Washer - Lock, internal tooth, for #2 screw, Shakeproof Cat. #1202, steel, black oxide	1
-13	36189-P2	.					Screw - Machine (special)	4
-14	36044-P1	.					Spring - Yoke	2
-15	36046-P1	.					Cover - Bed, Right	1
-16	Attaching Part 116-2-4C	.					Screw - Machine, 1/4 in. lg., #2-56, pan head, slotted, steel, chrome plate	3
-17	36046-P2	.					Cover - Bed, Left	1
-18	Attaching Part 116-2-4C	.					Screw - Machine, 1/4 in. lg., #2-56, pan head, slotted, steel, chrome plate	3
-19	36035-G2	.					Pinion Assembly - Focusing	1
	34111-P7	.					Insert - Leather	2
	36039	.					Knob - Focusing	NP NHA
	36040	.					Post - Yoke Lock	NP NHA
	36038-P1	.					Pinion - Focusing	NP NHA
-20	36259-P1	.					Spring - Focusing Pinion	2
-21	36047-P1	.					Spring - Bed Brace	1
-22	Attaching Part 106-5-3L	.					Screw - Machine, 3/16 in. lg., #5-40, oval, fillister head, slotted, steel, black oxide	2
-23	36049-G1	.					Bed Assembly (Super Graphic)	1
	36049-G4	.					Bed Assembly (Super Speed Graphic)	1
	36049-G2	.					Hinge Assembly	1
	36054	.					Socket - Tripod	NP NHA
	36051-P1	.					Hinge - Bed	NP NHA
	30172-P43K	.					Pin - Hinge, 1.343 in. lg., 0.0808 in. dia., phosphor bronze, oxide black	2
	36052-P1	.					Spring - Right	1
	36052-P2	.					Spring - Left	1
	36049-G3	.					Bed Sub Assembly (Super Graphic)	1
	36049-G5	.					Bed Sub Assembly (Super Speed Graphic)	1
	36356-G1	.					Cap Assembly - Bed (Super Graphic)	1
	36212-P3	.					Plate - Name (Super Graphic)	1
	36356-G2	.					Cap Assembly - Bed (Super Speed Graphic)	1
	36212-P4	.					Plate - Name (Super Speed Graphic)	1
	36048-P1	.					Covering - Bed	1
	36053	.					Rivet - Bed Brace	2
	36055-G1	.					Brace Assembly - Right	1
	36055-G2	.					Brace Assembly - Left	1
	36050-P1	.					Bed	NP NHA

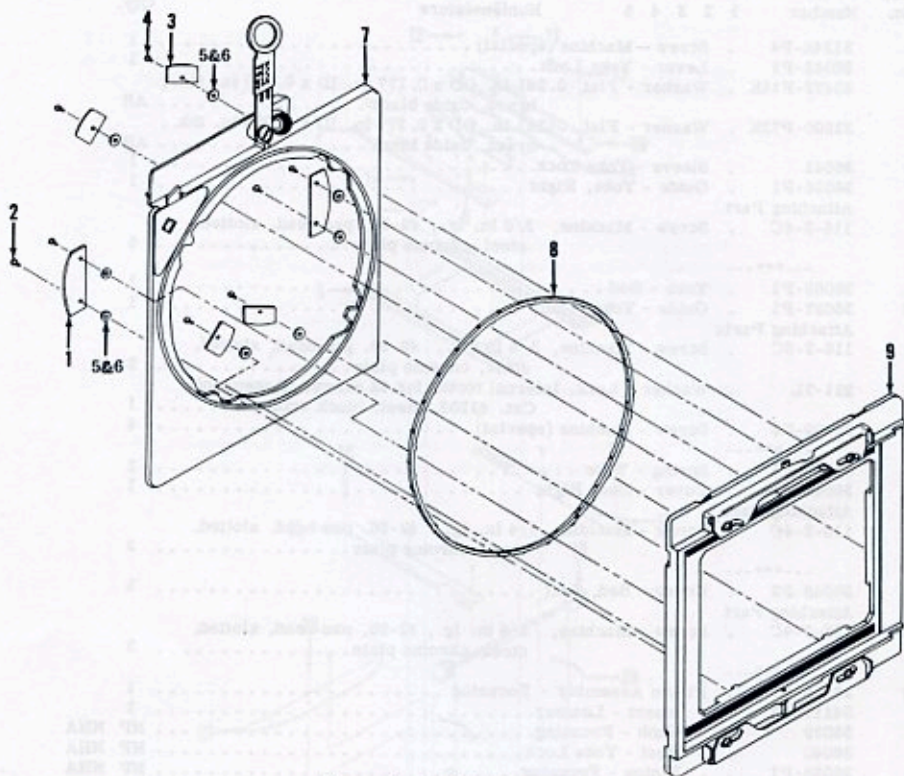


Figure 7. BACK ASSEMBLY

Figure and Index No.	Part Number	1	2	3	4	5	Nomenclature	Qty.	
7-	36060-G1	BACK ASSEMBLY							Ref.
-1	36062-P1	Retainer - Back (large)							2
	Attaching Part								
-2	116-2-2A	Screw - Machine, 1/8 in. lg., #2-56, pan head, cadmium plate							4

-3	36063-P1	Retainer - Back (small)							4
	Attaching Part								
-4	116-2-2A	Screw - Machine, (same as index 2)							4

-5	30473-P28K	Washer - Flat, 0.250 in. OD x 0.099 in. ID x 0.012 in. thk., brass, oxide black							AR
-6	30473-P42K	Washer - Flat, 0.250 in. OD x 0.099 in. ID x 0.016 in. thk., brass, oxide black							AR (no longer used)
-7	36068-G2	Frame Complete - Back, Stationary, (Figure 7A) replaces 36068-G2X							1
	36068-G2X	Frame Complete - Back, Stationary, (Figure 7B) replaced by 36068-G2							Ref.
-8	36061	Ring - Revolving							1
-9	36060-G2	Frame Complete - Revolving, (Figure 7C)							1

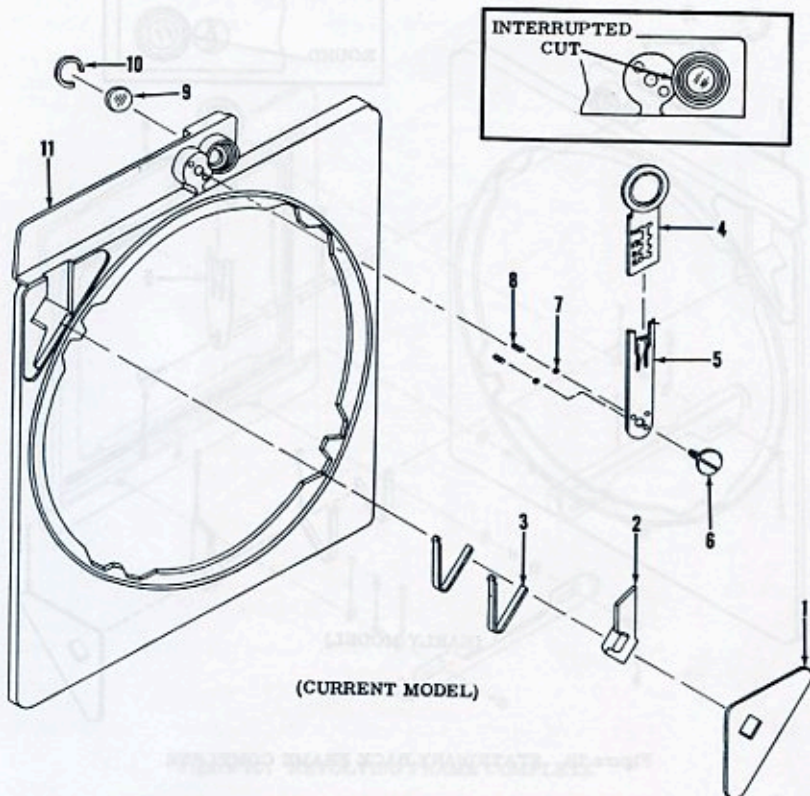


Figure 7A. STATIONARY BACK FRAME COMPLETE

Figure and Index No.	Part Number	1	2	3	4	5	Nomenclature	Qty.	
7A-	36068-G2	FRAME COMPLETE - BACK, STATIONARY						Ref.	
-1	36072-P1	.					Cover - Release Button	1	
-2	36070-P1	.					Button - Release	1	
-3	36071-P1	.					Spring - Button	2	
-4	36172-G1	.					Peepsight Assembly	1	
-5	36247-P1	.					Carrier - Peepsight	1	
	Attaching Part								
-6	36249	.					Screw - Machine (special)	1	
								
-7	300-4	.					Ball - Steel, 0.9375 in. dia.	2	
-8	36258	.					Spring - Carrier	2	
-9	34770	.					Window - Rear	1	
	Attaching Part								
-10	30442-P11	.					Ring - Retaining	1	
								
-11	36068-G1	.					Frame Assembly - Stationary	1	

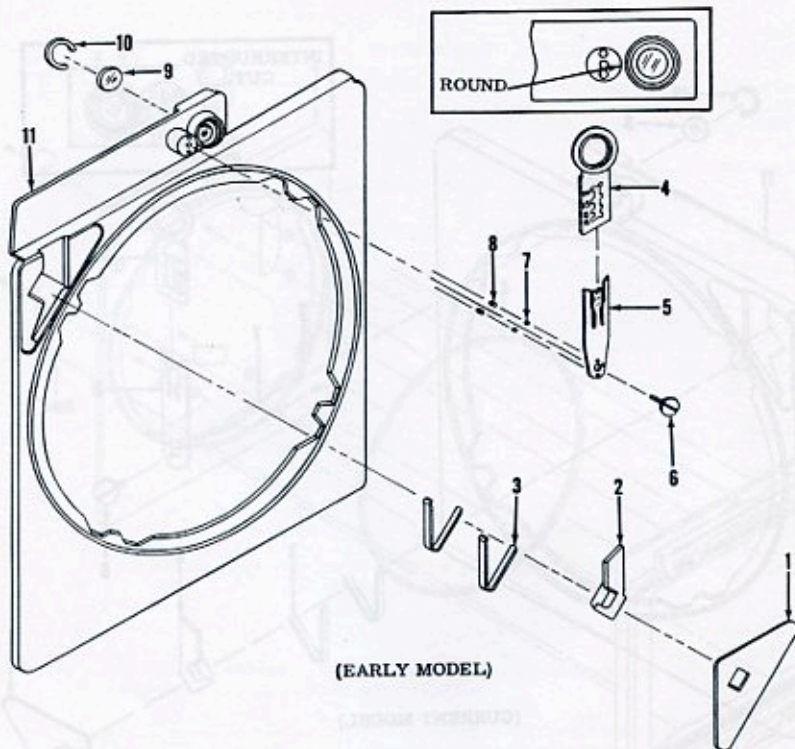


Figure 7B. STATIONARY BACK FRAME COMPLETE

Figure and Index No.	Part Number	1	2	3	4	5	Nomenclature	Qty.
7B-	36068-G2X						FRAME COMPLETE - BACK, STATIONARY (replace with 36068-G2)	Ref.
-1	36072-P1						Cover - Release Button	1
-2	36070-P1						Button - Release	1
-3	36071-P1						Spring - Button	2
-4	36172-G1						Peepsight Assembly	1
-5	36171-P1						Carrier - Peepsight	1
-6	36200						Screw - Machine (special)	1
-7	300-3						Ball - Steel, 0.0625 in. dia.	2
-8	22193						Spring - Carrier	2
-9	34770						Window - Rear	1
-10	30442-P11						Ring - Retaining	1
-11	36068-G1X						Frame Assembly - Stationary	Ref.

* These items are not interchangeable with current stationary frame assembly 36068-G1.

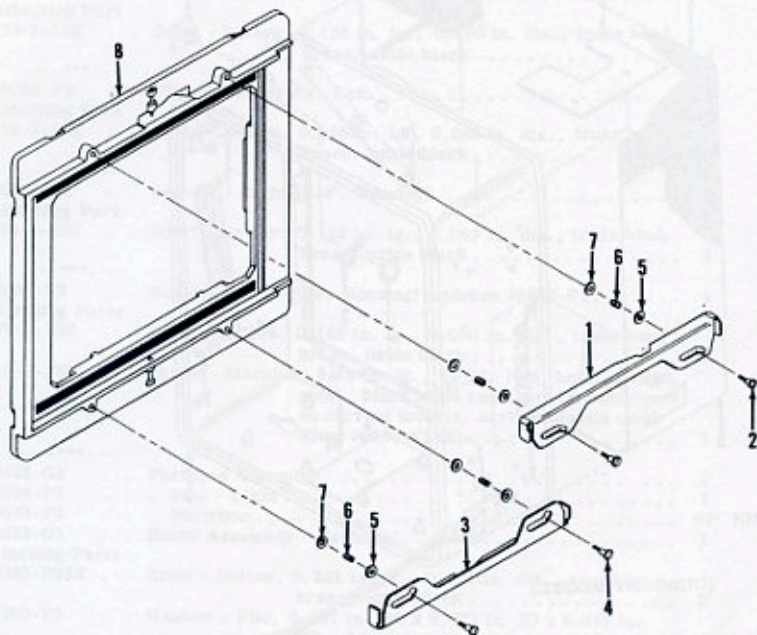


Figure 7C. REVOLVING FRAME COMPLETE

Figure and Index No.	Part Number	1	2	3	4	5	Nomenclature	Qty.
7C-	36060-G2						FRAME COMPLETE - REVOLVING	Ref.
-1	36066-P1						Lock - Slide, Upper	1
	Attaching Part							
-2	36067-P1						Screw - Machine (special)	2

-3	36066-P2						Lock - Slide, Lower	1
	Attaching Part							
-4	36067-P1						Screw - Machine (special)	2

-5	30473-P72H						Washer - Flat, 0.250 in. OD x 0.128 in. ID x 0.005 in. thk., brass, nickel plate	4
-6	36065						Spring - Slide Lock	4
-7	30473-P28K						Washer - Flat, 0.250 in. OD x 0.099 in. ID x 0.012 in. thk., brass, oxide black	4
-8	36350-G1						Frame Assembly	1
	31722-P3						Strip - Light Seal	2

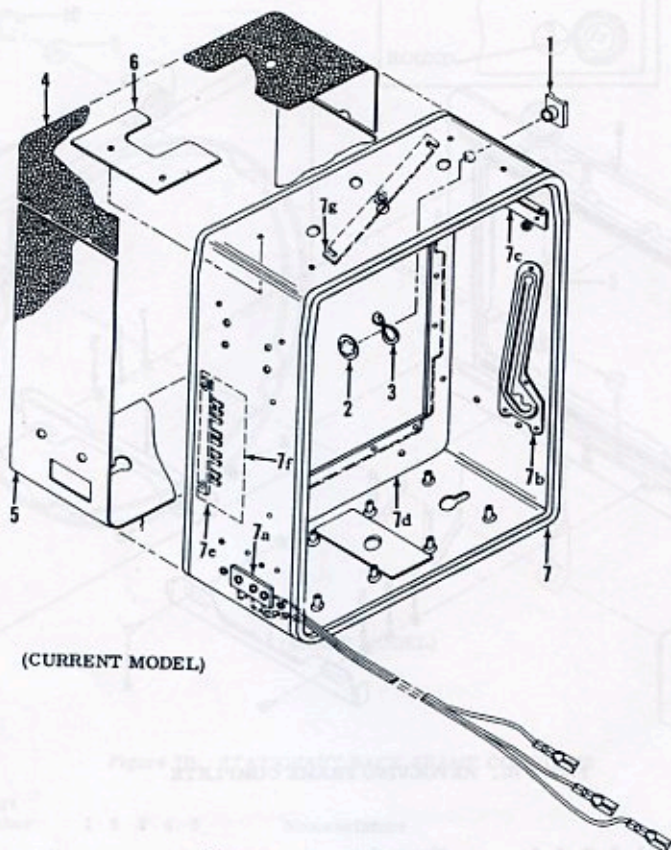


Figure 8. BODY COMPLETE

Figure and Index No.	Part Number	1	2	3	4	5	Nomenclature	Qty.	
8-	36020-G2	BODY COMPLETE (over serial no. 646124)							Ref.
-1	36024-P1	Guard - Shutter Release Button							1
Attaching Parts									
-2	254-3A	.	Ring - Retaining, Waldes-Kohnoor, Inc. p/n 5105-31, steel, cadmium plate					1	
-3	224-4A	.	Washer - Spring, Shakeproof p/n 3502-20-22, steel, cadmium plate					1	
.....									
-4	36022-P1	.	Covering - Upper					1	
-5	36022-P2	.	Covering - Lower					1	
-6	36204	.	Insulator - Battery					1	
-7	36025-G2	.	Body Assembly					1	
-7a	36233-G2	.	Receptacle Assembly					1	
Attaching Part									
	175-6-8K	.	Rivet - Hollow, 0.125 in. lg., 0.120 in. dia., oval head, brass, oxide black					2	
.....									

Figure and Index No.	Part Number	1	2	3	4	5	Nomenclature	Qty.
	36028-P1	.	.				Plate - Bed Brace, Right	1
	Attaching Part							
	176-3-10K	.	.				Rivet - Hollow, 0.156 in. lg., 0.060 in. dia., truss head, brass, oxide black	4

8-7b	36028-P2	.	.				Plate - Bed Brace, Left	1
	Attaching Part							
	176-3-10K	.	.				Rivet - Hollow, 0.156 in. lg., 0.060 in. dia., truss head, brass, oxide black	4

	36029-P1	.	.				Support - Right (R. F. Housing)	1
	Attaching Part							
	176-3-10K	.	.				Rivet - Hollow, 0.156 in. lg., 0.060 in. dia., truss head, brass, oxide black	2

-7c	36029-P2	.	.				Support - Left (R. F. Housing) replaces 36029-P1	1
	Attaching Parts							
	176-3-10K	.	.				Rivet - Hollow, 0.156 in. lg., 0.060 in. dia., truss head, brass, oxide black	1
	116-2-3W	.	.				Screw - Machine, 3/16 in. lg., #2-56, Pan head, slotted, steel, black oxide and clear lacquer (used on current models, earlier models used Rivet 30363-P27K)	1

-7d	36032-G2	.	.				Partition Assembly	1
	36034-P1	.	.				Seal - Light	1
	36033-P2	.	.				Partition	NP NHA
-7e	36322-G1	.	.				Board Assembly - Terminal	1
	Attaching Parts							
	30363-P23K	.	.				Rivet - Hollow, 0.281 in. lg., 0.062 in. dia., round head, brass, oxide black	2
	33500-P6	.	.				Washer - Flat, 0.187 in. OD x 0.071 in. ID x 0.016 in. thk., brass	2
	35473-P24	.	.				Washer - Flat, 0.187 in. OD x 0.070 in. ID x 0.032 in. thk., phenolic	4

-7f	36324	.	.				Insulator	1
-7g	36030-P1	.	.				Lock - Focusing Scale	1
	Attaching Part							
	36031	.	.				Stud - Focusing Scale Lock	1

	248-6-2	.	.				Fastener - Pem (press fit)	NP NHA
	30915-P2	.	.				Bushing - Bed Hinge (press fit)	NP NHA
	36026-P1	.	.				Body - Camera	NP NHA

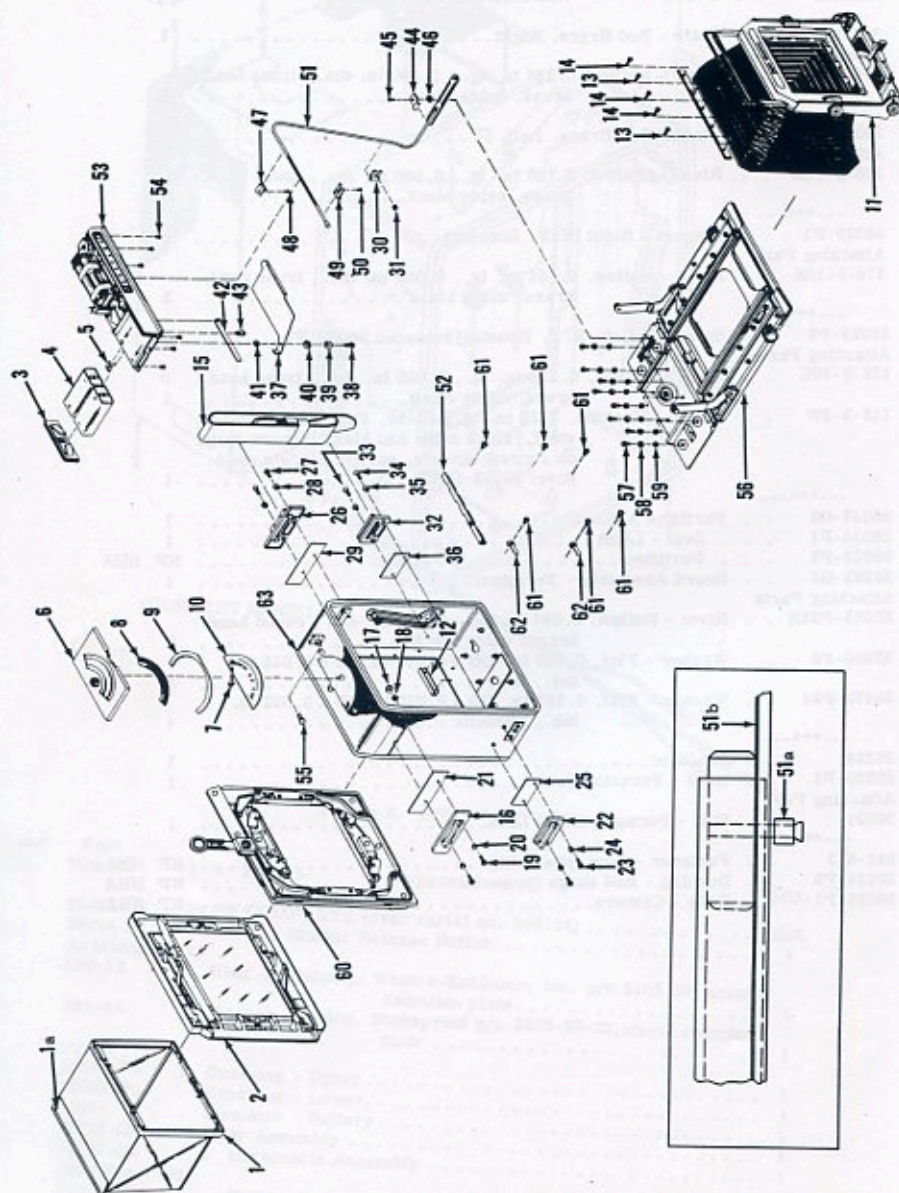


Figure 9. CAMERA BASIC (up to serial No. 646124)

Figure and Index No.	Part Number	1	1	2	3	4	5	Nomenclature	Qty.
9-	36000-G1							CAMERA BASIC - SUPER GRAPHIC (up to serial no. 646124) . . . Ref.	
-1	36082-G1							. Hood Assembly	1
-1a	36087-P1							. Clip - Dark Slide	1
-2	36073-G1							. Frame Assembly - Focusing (Figure 3)	1
-3	36198-G1							. Cover Assembly - Battery Compartment	1
-4	33111							. Battery, 22-1/2v., flat type, Eveready Cat. #412 or equal	2 LP
-5	36328-P1							. Clip - Retainer	1
-6	36176-G1							. Cover Assembly - Focusing Scale	1
-7	36002							. Indicator - Focusing Scale	1
-8	36001-P1							. Guide - Exposure	1
-9	36197-P1							. Spring - Exposure Guide	1
-10	36213-P1							. Plate - Focusing Scale	1
-11	36096-G1							. Standard Complete - Front (Figure 10)	1
	Attaching Parts								
-12	32459							. Clip - Bellows	6
-13	110-6-5W							. Screw - Machine, 5/16 in. lg., #6-32, straight side binding head, slotted, steel, black oxide & lacq.	2
-14	31089-P8							. Screw - Machine (special)	3

-15	36006-P1							. Handle	1
-16	36021-P1							. Bracket - Handle, Upper (right side)	1
	Attaching Parts								
-17	200-4HL							. Nut - Machine, #4 hex., steel, black oxide	2
-18	221-4L							. Washer - Lock, internal tooth, for #4 screw, Shakeproof Cat. #1204, steel, black oxide	2
-19	100-4R6E							. Screw - Machine, 3/8 in. lg., #4-40, flat head, Phillips Drive, steel, chrome plate	2
-20	36231							. Washer - Insulating, Parker-Kalon, #106, nylon	1

-21	36227-P1							. Insulator - Handle Bracket	1
-22	36021-P2							. Bracket - Handle, Lower (right side)	1
	Attaching Parts								
-23	100-4R5E							. Screw - Machine, 5/16 in. lg., #4-40, flat head, Phillips Drive, steel, chrome plate	2
-24	36231							. Washer - Insulating, Parker-Kalon, #106, nylon	2

-25	36227-P2							. Insulator - Handle Bracket	1
-26	36021-P1							. Bracket - Handle, Upper (left side)	1
	Attaching Parts								
-27	100-4R5E							. Screw - Machine, 5/16 in. lg., #4-40, flat head, Phillips Drive, steel, chrome plate	2
-28	36231							. Washer - Insulating, Parker - Kalon, #106, nylon	2

-29	36227-P1							. Insulator - Handle Bracket	1
-30	36193-P2							. Clamp	1
	Attaching Part								
-31	200-4HL							. Nut - Machine, #4 hex., steel, black oxide	1

-32	36021-P2							. Bracket - Handle, Lower (left side)	1
	Attaching Parts								
-33	100-4R6E							. Screw - Machine, 3/8 in. lg., #4-40, flat head, Phillips Drive, steel, chrome plate	1
-34	100-4R5E							. Screw - Machine, 5/16 in. lg., #4-40, flat head, Phillips Drive, steel, chrome plate	1
-35	36231							. Washer - Insulating, Parker-Kalon, #106, nylon	2

-36	36227-P2							. Insulator - Handle Bracket	1
-37	36092-P1							. Cover - Cam	1
	Attaching Parts								
-38	110-2-5W							. Screw - Machine, 5/16 in. lg., #2-56, straight side binding head, slotted, steel, black oxide & lacq.	1
-39	36244							. Collar - Cam Cover	1
-40	30540-P2							. Washer - Spring	1

Figure and Index No.	Part Number	1	2	3	4	5	Nomenclature	Qty.
9-41	30473-P25L	.	Washer - Flat, 0.281 in. OD x 0.093 in. ID x 0.012 in. thk., steel, black oxide.					1
-42	36130	.	Spring - Cam Cover					1
-43	36128	.	Stud - Cam Cover					1
-44	36193-P1	.	Clamp					1
	Attaching Parts							
-45	102B3-4K	.	Screw - Machine, 1/4 in. lg., #3-48, round head, slotted, brass, oxide black					1
-46	33500-P36	.	Washer - Flat, 0.312 in. OD x 0.128 in. ID x 0.062 in. thk., phenolic					1

-47	34723-P2	.	Clamp					1
	Attaching Part							
-48	102-3-2W	.	Screw - Machine, 1/8 in. lg., #3-48, round head, slotted, steel, black oxide & lacq.					1

-49	36193-P2	.	Clamp					1
	Attaching Part							
-50	102-3-2W	.	Screw - Machine, 1/8 in. lg., #3-48, round head, slotted, steel, black oxide & lacq.					1

-51	34739-G2	.	Tube Assembly - Rangefinder					1
-51a	36009	.	Collar - Pin					1
-51b	36195	.	Slide - Rangefinder Actuating					1
-52	36246-P1	.	Insulator - Junction					1
-53	36145-G1	.	Housing Complete - Rangefinder (Figure 11)					1
	Attaching Part							
-54	102-2-2W	.	Screw - Machine, 1/8 in. lg., #2-56, round head, slotted, steel, black oxide & lacq.					6

-55	36023-P1	.	Button - Shutter Release (0.547 in. lg.)					1
	36023-P2	.	Button - Shutter Release (0.501 in. lg.)					1
	36023-P3	.	Button - Shutter Release (0.591 in. lg.)					1
-56	36035-G1	.	Bed - Complete (Figure 6)					1
	Attaching Parts							
-57	116-2-4C	.	Screw - Machine, 1/4 in. lg., #2-56, pan head, slotted, steel, chrome plate					8
-58	221-2L	.	Washer - Lock, internal tooth, for #2 Screw, Shakeproof Cat. #1202, steel, black oxide					8 (no longer used)
-59	30473-P44K	.	Washer - Flat, 0.250 in. OD x 0.099 in. ID x 0.025 in. thk., brass, oxide black					8

-60	36060-G1	.	Back Assembly (Figure 7)					1
	Attaching Parts							
-61	110-6-3W	.	Screw - Machine, 3/16 in. lg., #6-32, straight side binding head, slotted, steel, black oxide & lacq.					6
-62	36219	.	Clip - Wire					2

-63	36020-G1	.	Body - Complete (Figure 12)					1

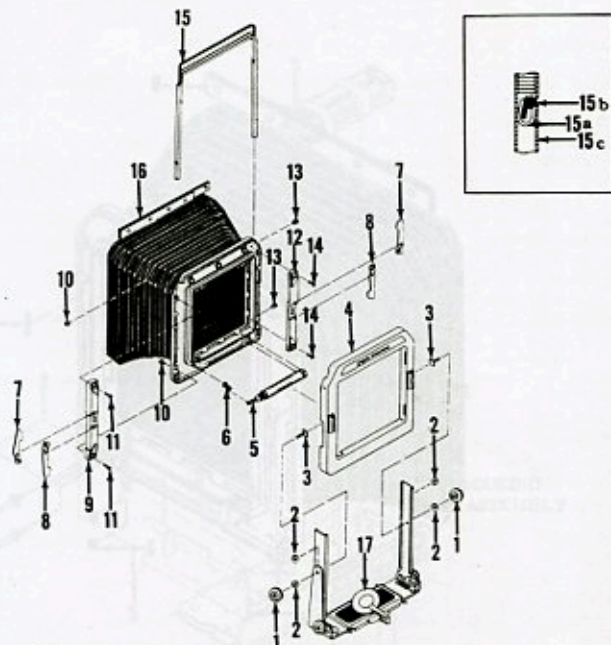


Figure 10. FRONT STANDARD COMPLETE

Figure and Index No.	Part Number	1	2	3	4	5	Nomenclature	Qty.
10-	36096-G1	STANDARD COMPLETE - FRONT (up to serial no. 646124) . . .						Ref.
-1	36105-P1	. Knob - Locking						2
-2	30473-P6	. Washer - Flat, 0.312 in. OD x 0.128 in. ID x 0.015 in. thk., fiber						4
-3	36127	. Stud - Front Frame Locking						2
-4	36117-G1	. Frame Assembly - Front						1
	36212-P1	. Plate - Name						1
-5	36133-G1	. Solenoid Assembly (Figure 4A)						1
-6	36123-P1	. Crank - Shutter Trip						1
-7	36124-P1	. Lock - Upper						2
-8	36124-P2	. Lock - Lower						2
-9	36113-G1	. Stile Assembly - Right						1
Attaching Parts								
-10	36043	. Nut - Machine (special)						2
-11	116-2-6C	. Screw - Machine, 3/8 in. lg., #2-56, pan head, slotted, steel, chrome plate						2
-12	36113-G2	. Stile Assembly - Left						1
Attaching Parts								
-13	36043	. Nut - Machine (special)						2
-14	116-2-6C	. Screw - Machine, 3/8 in. lg., #2-56, pan head, slotted, steel, chrome plate						2
-15	34848-G3	. Finder Complete						1
-15a	34785-G1	. Finder Assembly						1
-15b	34787	. Stop - Finder						2
-15c	34795	. Frame - Finder						1
-16	36125-G1	. Bellows Complete (Figure 10A)						1
-17	36178-G1	. Standard Assembly - Front (Figure 4C)						1

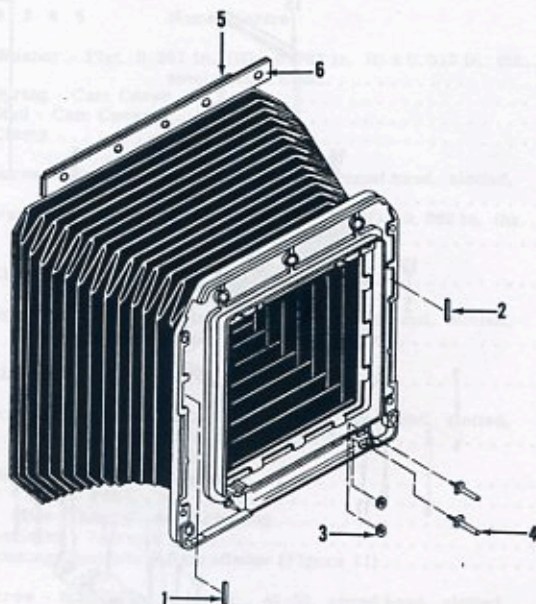


Figure 10A. BELLOWS COMPLETE

Figure and Index No.	Part Number	1	2	3	4	5	Nomenclature	Qty.
10A-	36125-G1						BELLOWS COMPLETE (up to serial no. 646124)	Ref.
-1	36337-P1						Shim - Right	1
-2	36337-P2						Shim - Left	1
-3	200B1HR						Nut - Machine, #1 hex., brass, tin plate	2
-4	36121-P1						Contact - Solenoid.	2
No Number							Insulator and Spring Sub Assembly (cemented).	Ref.
-5	36211-P2						Insulator	1
-6	36230-P1						Spring	1
No Number							Bellows and Base Assembly	NP NHA

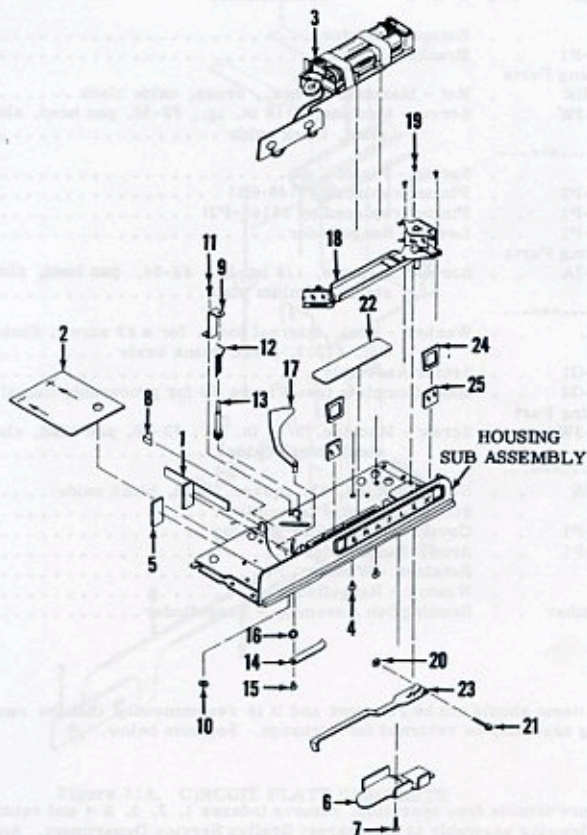


Figure 11. RANGEFINDER HOUSING COMPLETE

Figure and Index No.	Part Number	1	2	3	4	5	Nomenclature	Qty.
11 -	36145-G1						HOUSING COMPLETE - RANGEFINDER (up to serial no. 64124)Ref.	
-1	36229						. Partition - Battery (replaced by 36349-P1)	Ref.
-2	36217						. Guard (flat type, replaced by 36349-P1)	Ref.
	36349-P1						. Guard (replaces p/n 36229 & 3617)	1
-3	36207-G1						. Plate Complete - Circuit (Figure 11A)	1
	Attaching Part							
-4	131-3-3L						. Screw - Thread Cutting, 3/16 in. lg., #3, Shakeproof Type 23, binding (pan) head, slotted, steel, black oxide	2

	36145-G3						. Housing Assembly - Rangefinder	1
-5	36346						. Insulator - Battery Contact Plate	2
-6	36245-P1						. Shield - Rangefinder Arm	1
	Attaching Part							
-7	100B3-4K						. Screw - Machine, 1/4 in. lg., #3-48, flat head, slotted, brass, oxide black	1

Figure and Index No.	Part Number	1	2	3	4	5	Nomenclature	Qty.
11-8	36010	Bumper - Sector	1
-9	36147-P1	Bracket - Pinion	1
	Attaching Parts							
-10	200B2HK	Nut - Machine, #2 hex., brass, oxide black	1
-11	116-2-3W	Screw - Machine, 3/16 in. lg., #2-56, pan head, slotted, steel, black oxide	1

-12	36149	Spring - Pinion	1
-13	36148-P2	Pinion (replaces 36148-P1)	1
	36148-P1	Pinion (replaced by 36148-P2)	Ref.
-14	36150-P1	Lever - Rangefinder	1
	Attaching Parts							
-15	116-2-2A	Screw - Machine, 1/8 in. lg., #2-56, pan head, slotted, steel, cadmium plate	1

-16	221-2L	Washer - Lock, internal tooth, for a #2 screw, Shakeproof Cat. #1202, steel, black oxide	1
-17	36155-G1	Sector Assembly	1
-18	* 36158-G2	Base Complete (see Figure 5B for procurable items)	1
	Attaching Part							
-19	* 116-2-3W	Screw - Machine, 3/16 in. lg., #2-56, pan head, slotted, steel, black oxide	3

-20	* 200-3SK	Nut - Machine, #3, square, steel, black oxide	1
-21	* 36152	Screw - Machine (special)	1
-22	* 36153-P1	Cover - Rangefinder Housing	1
-23	* 36169-P1	Arm - Rangefinder	1
-24	36205	Retainer - Window	2
-25	36154	Window - Rangefinder	2
	No Number	Housing Sub Assembly - Rangefinder	Ref.

* These items should not be removed and it is recommended that the rangefinder housing assembly be returned for exchange. See note below.

NOTE: To insure trouble free operation, remove indexes 1, 2, 3, & 4 and return rangefinder housing assembly to the nearest Graflex Service Department. An alternate rangefinder housing assembly (at nominal charge), with critical mirror and lever adjustments accomplished, will be returned. A focusing scale indicator (Figure 9-7) and guard (Figure 11-2) will also be furnished for installation. Use Cat. #9472 in correspondence when using the exchange program for rangefinder housing assembly.

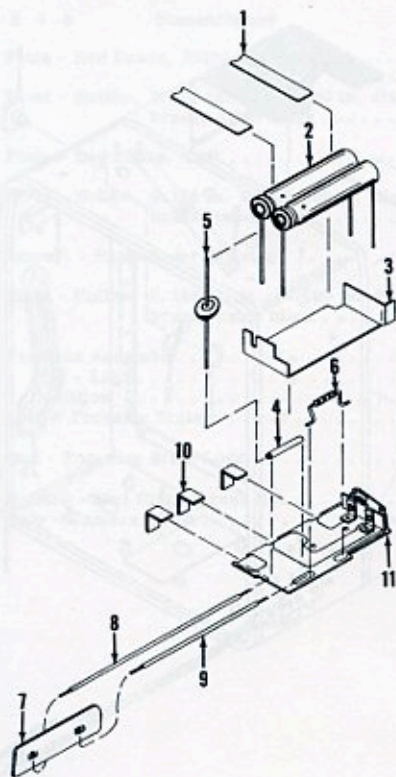


Figure 11A. CIRCUIT PLATE COMPLETE

Figure and Index No.	Part Number	1	2	3	4	5	Nomenclature	Qty.
11A-	36207-G1						PLATE COMPLETE - CIRCUIT (up to serial no. 646124).	Ref.
-1							. Tape (5/16 in. wide) black Mylar, 3M Scotch Brand Cat. #850	AR LP
-2	36167-P1						. Capacitor	2
-3	36203						. Insulator	1
-4	37238-P9						. Tubing (3/4 in. lg.) #20, black extruded vinyl	1 LP
-5	38293P4						. Diode, JEDEC # IN2483	1
-6	402-27-2-2						. Resistor, 1/2 w., 2700 ohms	1
-7	36208-G1						. Plate Assembly - Battery Contact	1
-8	36207-P6						. Wire (4-1/2 in. lg.) No. 24 AWG, black insulation	1 LP
-9	36207-P7						. Wire (3-1/4 in. lg.) No. 24 AWG, black insulation	1 LP
-10	36166						. Terminal	3
-11	36162-G1						. Plate Assembly - Circuit (includes switch)	1

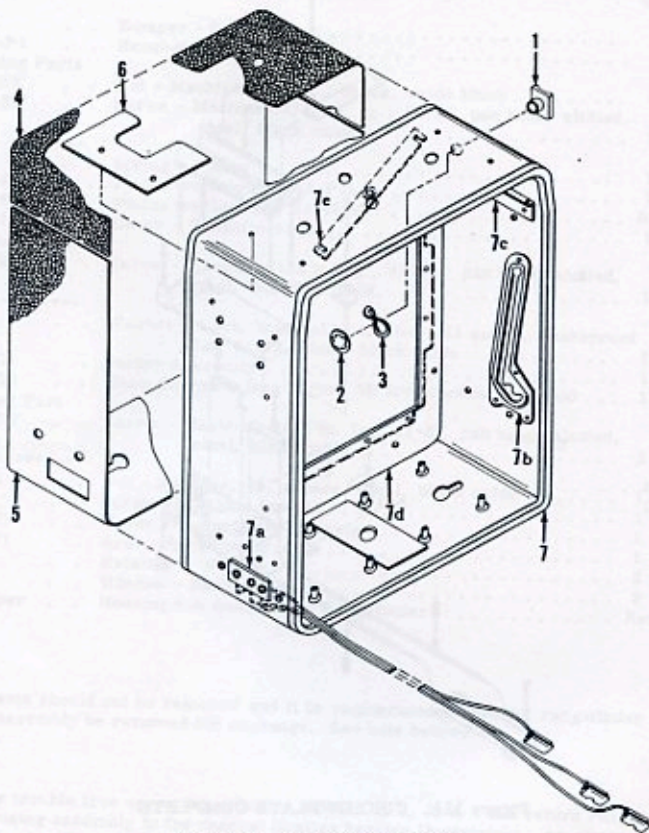


Figure 12. BODY COMPLETE

Figure and Index No.	Part Number	1	2	3	4	5	Nomenclature	Qty.
12-	36020-G1						BODY COMPLETE (up to serial no. 646124)	Ref.
-1	36024-P1						Guard - Shutter Release Button	1
	Attaching Parts							
-2	254-3A						Ring - Retaining, Waldes-Kohlnoor, Inc. p/n 5105-31, steel, cadmium plate	1
-3	224-4A						Washer - Spring, Shakeproof p/n 3502-20-22, steel, cadmium plate	1
							
-4	36022-P1						Covering - Upper	1
-5	36022-P2						Covering - Lower	1
-6	36204						Insulator - Battery	1
-7	36025-G1						Body Assembly	1
-7a	36233-G1						Receptacle Assembly	1
	Attaching Part							
	175-6-8K						Rivet - Hollow, 0.125 in. lg., 0.120 in. dia., oval head, brass, oxide black	2
							

Figure and Index No.	Part Number	1	2	3	4	5	Nomenclature	Qty.
	36028-P1	Plate - Bed Brace, Right.	1
	Attaching Part							
	176-3-10K	Rivet - Hollow, 0.156 in. lg., 0.060 in. dia., truss head, brass, oxide black	4
	---***---							
12-7b	36028-P2	Plate - Bed Brace, Left	1
	Attaching Part							
	176-3-10K	Rivet - Hollow, 0.156 in. lg., 0.060 in. dia., truss head, brass, oxide black	4
	---***---							
-7c	36029-P1	Support - Rangefinder Housing	2
	Attaching Part							
	176-3-10K	Rivet - Hollow, 0.156 in. lg., 0.060 in. dia., truss head, brass, oxide black	4
	---***---							
-7d	36032-G1	Partition Assembly.	1
	36034-P1	Seal - Light.	1
	36033-P1	Partition	NP NHA
-7e	36030-P1	Lock - Focusing Scale.	1
	Attaching Part							
	36031	Stud - Focusing Scale Lock	1
	---***---							
	30915-P2	Bushing - Bed Hinge (press fit).	NP NHA
	36026-P1	Body - Camera	NP NHA